

Eirich Intensive Mixers for laboratory and small-scale production

Eirich intensive mixers are economical, reliable and low maintenance.



The Pioneer in Material Processing®



Small-scale production mixers

R05 / R08 / R09

Application

The mixer types of the small-scale production mixers are particularly suitable for products with small batch volumes, which occur in constantly changing quantities and compositions. They can be used in facilities with just-in-time manufacturing or development laboratories.

Advantages of the Eirich Mixer

- Shortest mixing times with highest product homogeneity
- Low cleaning effort
- Reliable reproducibility of product quality and batch times
- Targeted energy input through controllable drives of mixing tool and mixing vessel

One mixer – Many possibilities

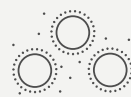
For excellent processing results for all consistencies



Mixing



Granulating



Coating



Dispersing



Plasticizing

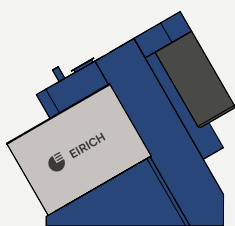


The Eirich Mixing Principle

The special mixing system consists of only 3 components, which can be flexibly adapted to the requirements of the mixing processes.

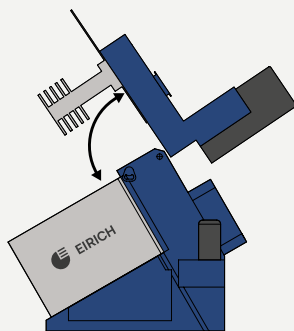
- 1 The rotating mixing vessel conveys the material into the area of the mixing tools.
- 2 An eccentrically arranged mixing tool, whose design, direction of rotation, and speed can be optimally adapted to the respective application. In addition, a strong vertical component of the material flow can be achieved by inclining the rotating mixing vessel.
- 3 The scraper provides additional blending, prevents build-up of material on the wall and bottom, and assists the emptying process.

Mixer configuration available in three versions



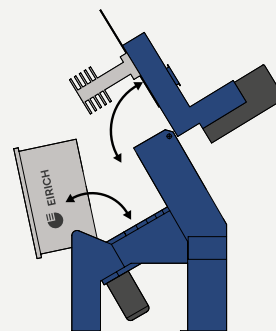
Standard Type

- Side access door on the vessel
- Top loading
- Bottom discharge



W-Type

- Improved accessibility through hinged mixing vessel cover
- Top loading or directly over the hinged mixing vessel cover
- Bottom discharge



T-Type

- Optimal accessibility through hinged mixing vessel cover and tiltable mixing vessel
- Top loading or directly over the hinged mixing vessel cover
- Discharge via tilted vessel

| | R05 | R08 | R09 |
|---------------------------------|-----|-----|-----|
| Minimum filling volume (liters) | 15 | 25 | 50 |
| Maximum filling volume (liters) | 40 | 75 | 150 |
| Standard mixer inclination | 30° | 30° | 30° |
| Standard Type | x | x | ✓ |
| W-Type | x | ✓ | ✓ |
| T-Type | ✓ | x | ✓ |





Small-scale production mixer series



Economical and operationally reliable with the possibility of integration into automated systems



R09 in standard configuration

Standard Type Mixer

Application

- Entry-level for batch operation
- with accessibility for impeller exchange via large service door of the vessel

Equipment options

- Temperature measurement probe
- Stainless steel (INOX) version of product contacting parts
- Ex-version
- Cleaning system
- Moisture measurement probe
- Different base frames for fixed tilt adjustment to 0°, 10°, or 20°
- Various wear protection designs for vessel, rotor tool and wall scraper
- Various rotor tool variants

Advantages of the Eirich Mixer

- Adjustable maintenance position for optimal access to the mixing vessel

Individual machine control

- Available in Basic or Premium Touch version

Loading and discharge

- Manual loading via feed flap or fixed piping on the mixer cover
- Discharging via bottom discharge gate

Standard type with side access door

| Type | Capacity* | Drive power | Weight (depending to equipment) |
|------|------------------------------|--------------------------|------------------------------------|
| R09 | 50 - 150 liters, max. 240 kg | Mixing vessel: 4 kW | approx. 1250 kg |
| | | Rotor drive: 5.5 - 22 kW | |

*dependent on the configuration type

You can find further technical data for your planning after the type description.



Increased comfort



R08W / R09W

W-Type Mixer

Application

For batch production with frequent product and tool changes.

Equipment options

- Temperature measurement probe
- Stainless steel (INOX) version of product-contacting parts
- Ex-version
- Cleaning system
- Moisture measurement probe
- Underneath wedges for fixed tilt adjustment to 0°, 10°, or 20°
- Various wear protection designs for vessel, rotor tool, and wall scraper
- Various rotor tool variants
- Various heating systems
- Rheology measurement QualiMaster RT1

Advantages of the Eirich Mixer

- Quick and ergonomic access to the mixing tools via hinged mixing vessel cover
- Optimal cleaning of the mixer interior
- Short set-up time for tool changes
- Reliable reproducibility and scalability

Individual machine control

- Available in Basic or Premium Touch version

Loading and discharge

- Manual loading via feed flap, flexible piping or opened mixing vessel cover
- Discharging via bottom discharge flap

Type W with hinged vessel cover

| Type | Capacity* | Drive power | Weight (depending on equipment) |
|------|-----------------------------|--------------------------|---------------------------------|
| R08W | 25 - 75 Liter, max. 120 kg | Mixing vessel: 2.2 kW | approx. 900 kg |
| | | Rotor drive: 3 - 22 kW | |
| R09W | 50 - 150 Liter, max. 240 kg | Mixing vessel: 4 kW | approx. 1250 kg |
| | | Rotor drive: 5.5 - 22 kW | |

*dependent on the configuration type

You can find further technical data for your planning after the type description.

+ Maximum adaptable and highest comfort



R05T with hinged cover and tilted vessel

T-Type Mixer

Application

For production lines or development laboratories that work with small batch volumes and have to meet the requirements of frequently changing quantities and compositions.

Equipment options

- Temperature measurement probe
- Stainless steel (INOX) version of product contacting parts
- Ex-version
- Cleaning system
- Moisture measurement probe
- Various wear protection designs for vessel, rotor tool and wall scraper
- Various rotor tool variants
- Rheology measurement QualiMaster RT1
- Hydraulic tilt adjustment for adapting the mixer inclination to the processing method
- Systems for temperature control and heating
- Dissolving mixer version MixSolver RL05T, as a horizontal 40l mixer with coolable vessel

Advantages of the Eirich Mixer

- The tilt function makes emptying and cleaning quick and easy
- No product carryover due to optimal accessibility of all product contacting parts
- Short set-up time for tool changes
- The variable tilting platform enables all preparation processes, filling levels and measuring functions
- Reliable reproducibility and scalability

Individual machine control

- Available in Basic or Premium Touch version

Loading and discharge

- Manual loading via feed flap or opened mixing vessel cover
- Discharging via tilted mixing vessel

Type T with hinged vessel cover and tiltable vessel

| Type | Capacity* | Drive power | Weight (depending on equipment) |
|------|------------------------------|--------------------------|------------------------------------|
| R05T | 15 - 40 liters, max. 65 kg | Mixing vessel: 1.5 kW | approx. 650 kg |
| | | Rotor drive: 3 - 15 kW | |
| R09T | 50 - 150 liters, max. 240 kg | Mixing vessel: 3 kW | approx. 1250 kg |
| | | Rotor drive: 5.5 - 22 kW | |

*dependent on the configuration type

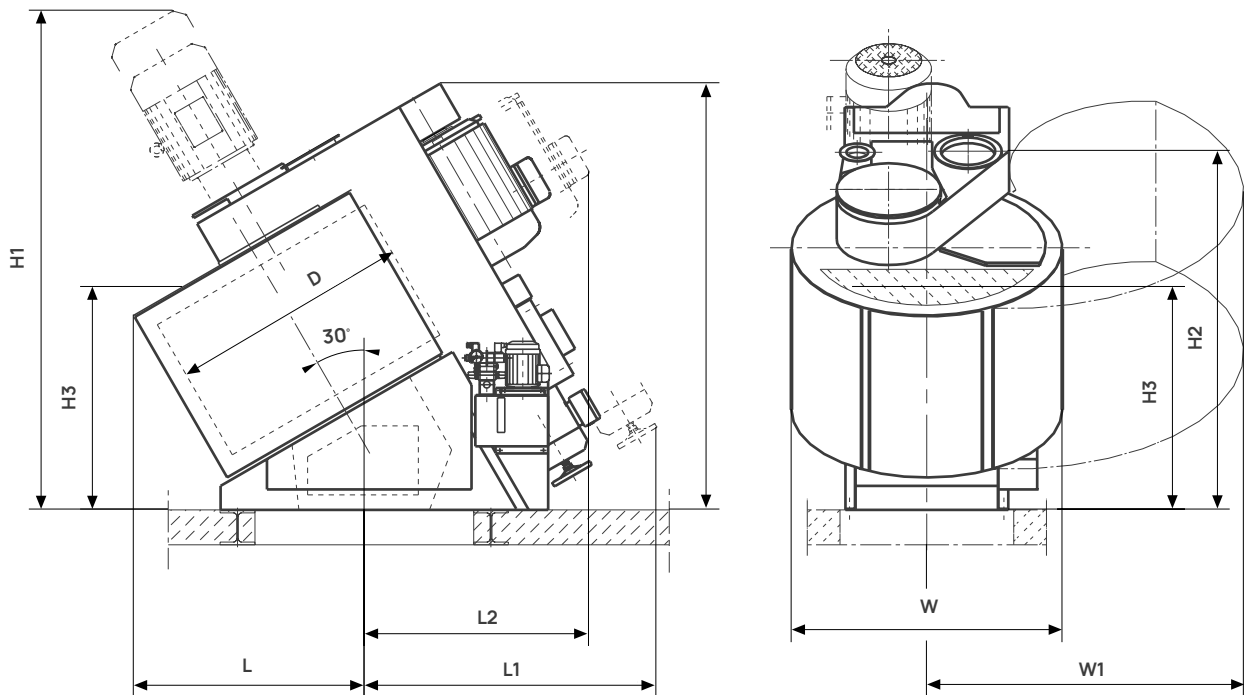
You can find further technical data for your planning after the type description.

Overview

Small-scale production mixer series

| | R05 | R08 | R09 |
|--------------------------------------------------------------------|----------|--------------|--------------|
| Minimum filling volume (liters) | 15 | 25 | 50 |
| Maximum filling volume (liters) | 40 | 75 | 150 |
| Standard mixer inclination | 30° | 30° | 30° |
| Base frame for fixed tilt adjustment of | 10°, 20° | 0°, 10°, 20° | 0°, 10°, 20° |
| Hydraulic tilt adjustment for flexible tilt adjustment to 0° - 30° | ✓ | ✗ | ✓ |
| Standard type | ✗ | ✗ | ✓ |
| W-type | ✗ | ✓ | ✓ |
| T-type | ✓ | ✗ | ✓ |
| High-pressure cleaning | ✓ | ✓ | ✓ |
| Mild steel | ✓ | ✓ | ✓ |
| Stainless steel (INOX) version | ✓ | ✓ | ✓ |
| Ex-proof (Explosion-proof) version | ✓ | ✓ | ✓ |
| Temperature measurement probe in wall scraper | ✓ | ✓ | ✓ |
| Moisture measurement probe in the vessel bottom | ✓ | ✓ | ✓ |
| Rheology measurement QualiMaster RT1 | ✓ | ✓ | ✓ |
| Double wall heating/cooling | ✓ | ✗ | ✗ |
| Infrared radiator | ✓ | ✓ | ✓ |
| Induction heating | ✗ | ✓ | ✗ |

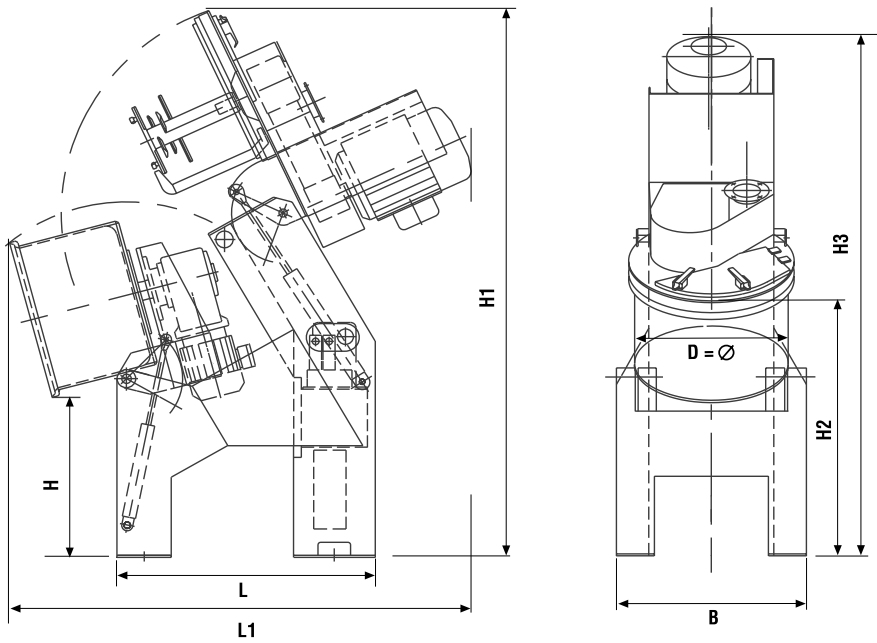
Technical data for your planning



Standard type with side access door

| Type | H | H1 | H2 | H3 | L | L1 | L2 | W | W1 | D |
|------|------|------|------|-----|-----|-----|-----|------|------|-----|
| R09 | 1645 | 1805 | 1370 | 810 | 870 | 980 | 820 | 1075 | 1285 | 900 |

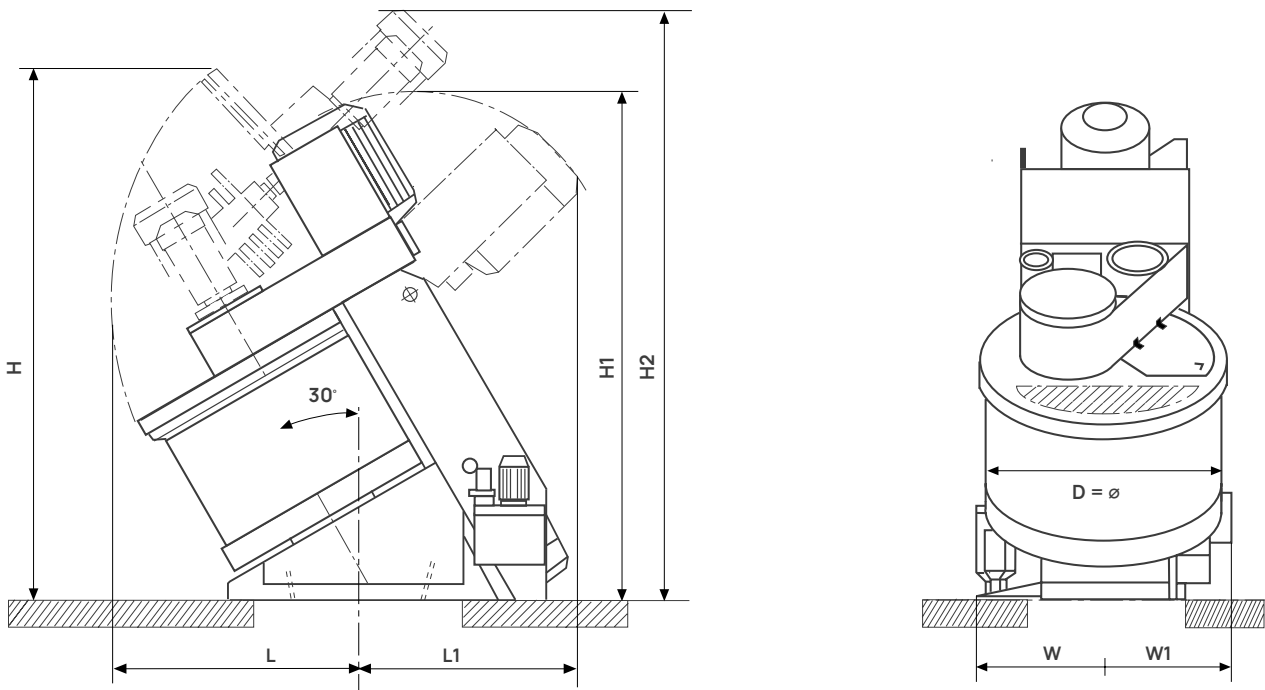
Size in mm



Our machines are subject to constant technical development in terms of technical design and may therefore vary from illustrations provided in this brochure.

Type T with tiltable vessel

| Type | H | H1 | H2 | H3 | L | L1 | B | D |
|------|-----|------|------|------|------|------|------|-----|
| R05T | 600 | 2080 | 925 | 2000 | 950 | 1700 | 700 | 550 |
| R09T | 600 | 3000 | 1200 | 2800 | 1350 | 2400 | 1054 | 900 |



Type W with hinged vessel cover

| Type | H | H1 | H2 | L | L1 | W | W1 | D |
|------|------|------|------|-----|------|-----|-----|-----|
| R08W | 2030 | 1800 | - | 800 | 900 | 400 | 500 | 750 |
| R09W | 2360 | 2000 | 2400 | 950 | 1000 | 500 | 550 | 900 |





Control units

Small-scale production mixers

Basic Touch Control

Basic Touch Control with optional push-button operation for all key functions, user-friendly touch interface for setting operating parameters and displaying current machine data such as tool speed, motor power and torque.

Premium Touch Control

Premium Touch Control with user-friendly multi-touch interface for manual and automatic operation and logging of mixing processes with recipe management and batch-specific process value recording.

Features

- Flexible coupling to higher-level control systems
- Recording of process values during the mixing process
- Contacts for activation of two material feeds

Options

- Integration of peripheral components such as dosing devices
- Temperature detection with recording function
- Rheological measuring function QualiMaster RT1



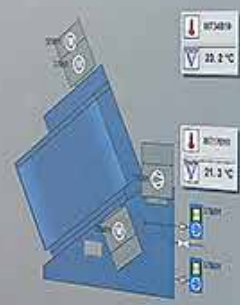
SIMATIC

10.02.11 03.05.2010

| Name | |
|-----------|----------|
| Objekt | 005.03 |
| Typ | 001 |
| Werk | 00100000 |
| Station | 001 |
| Druckname | 0000 |

| Werte | |
|-----------|----------|
| Objekt | 10.000 |
| Umsatz | 21.000 |
| Werk | 00100000 |
| Station | 001 |
| Druckname | 0000 |

| Werte | |
|-----------|----------|
| Objekt | 10.000 |
| Umsatz | 21.000 |
| Werk | 00100000 |
| Station | 001 |
| Druckname | 0000 |



| Basic status | |
|--------------|--------------------|
| 500 | Basic status |
| 501 | Step 1 |
| 502 | STEP2 |
| 503 | ... |
| 504 | ... |
| 505 | ... |
| 506 | ... |
| 507 | ... |
| 508 | ... |
| 509 | ... |
| 510 | ... |
| 511 | ... |
| 512 | ... |
| 513 | ... |
| 514 | ... |
| 515 | ... |
| 516 | Ma finished |
| 517 | Discharge the hour |

| Control | |
|---------|-----|
| 0.000 | ... |
| 0.045 | ... |



The Eirich Group, with Maschinenfabrik Gustav Eirich as its strategic center in Hardheim, is a supplier of machinery, systems, and services for industrial mixing, granulating/pelletizing, drying, and fine grinding. Our core expertise is in the field of processes and techniques used for the preparation of pourable materials, slurries, and sludges. We are a family-run company that operates 16 sites around the world.



More information at:
www.eirich.com