

Control Technology

APS Performance UL Type 4x Control Panel

Why buy your controls from Eirich Machines?

Three words: **Quality - Safety - Performance**

Quality

At Eirich Machines we build our own control panels. We are a UL 508a listed panel shop and are ISO 9001:2015 certified. We carefully choose the components we use to design our machine controls, selecting them based on performance, reliability, and price. All machine controls are fully tested with their respective equipment in a rigorous QC process.

Safety

Today there is an ever-changing emphasis on machine safety and the world moving towards a global standard for machine safety. At Eirich Machines we take machine safety very seriously. We work hard to keep informed on the latest safety standards and design our control systems with this in mind. We implement the latest safety technology that meets today's standard and in to the future.

Functional safety standards:

IEC62061 + ISO 13849-1 => IEC/ISO 17305 (2016/18)

Performance

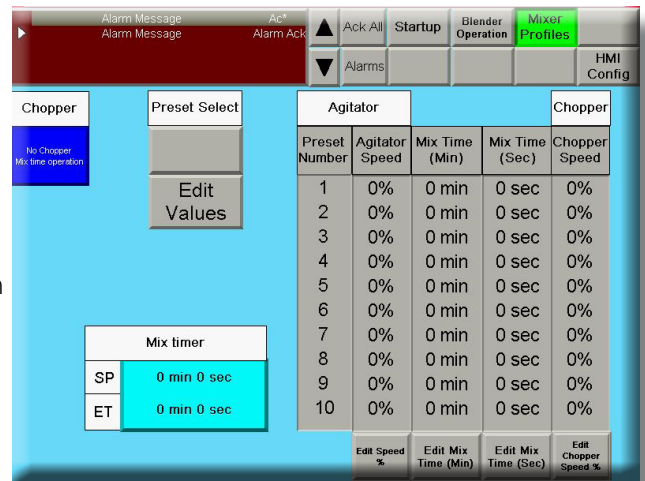
You invest a lot of capital in high-performance mixing and blending equipment. Why would you not want the control of that equipment to perform to the same standard? At Eirich Machines we know our equipment better than anyone. We design our control system to be precisely matched to our machines. Designed to the latest standards with the latest technology, you can trust that our equipment will be reliable and supportable long into the future.



APS Performance Control Panel Specifications

Design features and technology benefits

- cUL listed
- 7" color screen, Rockwell HMI, for selection of modes, times, and ten different preset mix profiles. Display of blender status, drive status, and kW.
- Operator push buttons as required for manual operation, such as E-Stop, Safety Reset, Blender Control, and Discharge Control
- 304 SS sanitary construction



Rockwell Micro800 PLC



Circuit breaker for 24VDC circuits. Protects its individual circuits via electronic fusing.

Programmable safety relay. It is programmed based on safety measures on the machine, such as E-stops, safety switches, or covers.

Power supply. Transforms AC line voltage and rectifies it into DC, typically 24V.

Main disconnect. Customer to connect incoming power to this circuit breaker. Control panels are typically designed for 480VAC/3Phase/60Hz, but we can accommodate for other voltage requirements.

Variable frequency drive (VFD). Controls speed and torque of a motor by varying the frequency and voltage output.

Eirich Machines, part of worldwide Eirich Group, is an international supplier of machinery, systems, and services for material processing. With the two product lines EIRICH and American Process Systems® (APS), we offer the most comprehensive range of mixers, blenders, pelletizers, dryers, and grinding mills.

Our APS product line includes:

- Fluidizing Paddle Blenders
- Ribbon Blenders
- Paddle-Ribbon Blenders
- Paddle Blenders
- Plow Blenders
- Dryers/Reactors



Eirich Machines, Inc.

4033 Ryan Road
Gurnee, IL 60031

847-336-2444

eirich@eirichusa.com

www.eirichusa.com