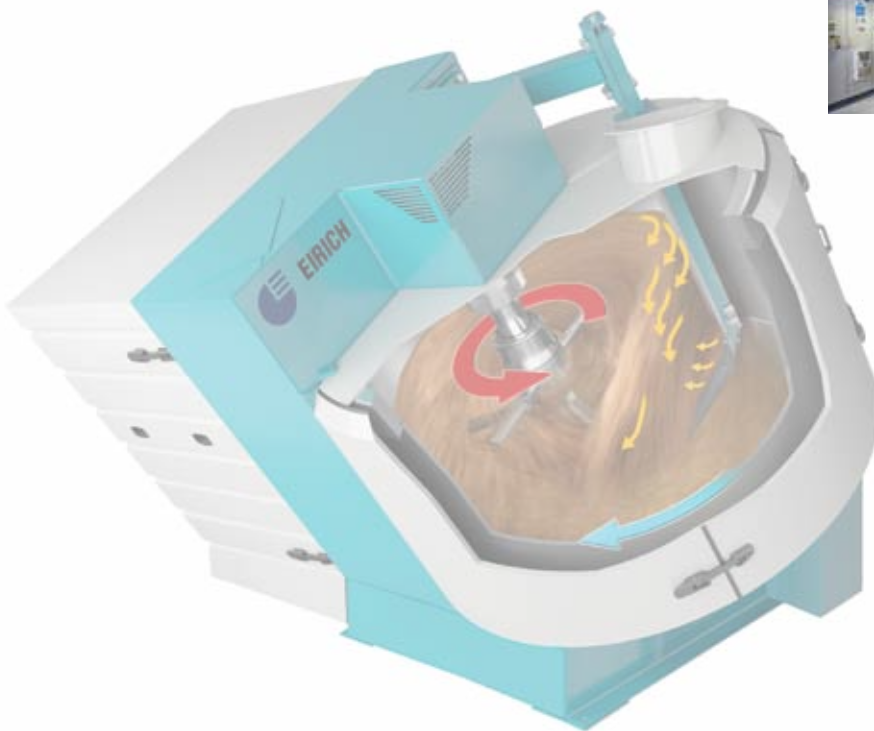
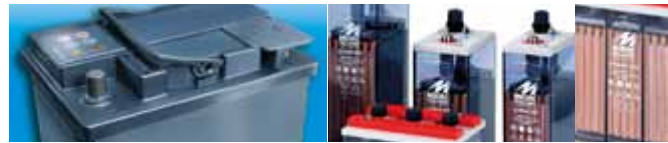


# Processing Technology for Lead Acid Paste

Efficient  
Environmentally friendly  
Low maintenance



# Innovative technology for the battery industry

Sophisticated technology for the efficient and economical preparation of lead acid paste – which also takes account of environmental interests – is vital to attain the high standards of quality imposed on battery systems.

For several decades now, EIRICH has been supplying innovative, future-proof technology. This technology, supported by a complete package of services, is based on intensive research conducted in close cooperation with the battery industry.

## Process technology

The unique **EVACTHERM®** process for the preparation of lead acid paste, which was developed by EIRICH, has since been implemented in more **than 95 systems** for top-name manufacturers worldwide. The optimal system configuration is assembled from the EIRICH module system to meet the user's specific needs, e.g. production range, capacity and degree of automation.

## EVACTHERM® mixing reactor

A closed, environmentally friendly processing system enables exact reproducibility of reactions and hence paste quality.

## Feeding and weighing technology

Modules – developed and manufactured by EIRICH itself – are available for the automatic feeding of all raw materials, additives and fibers in exact compliance with the formula.

## Process control

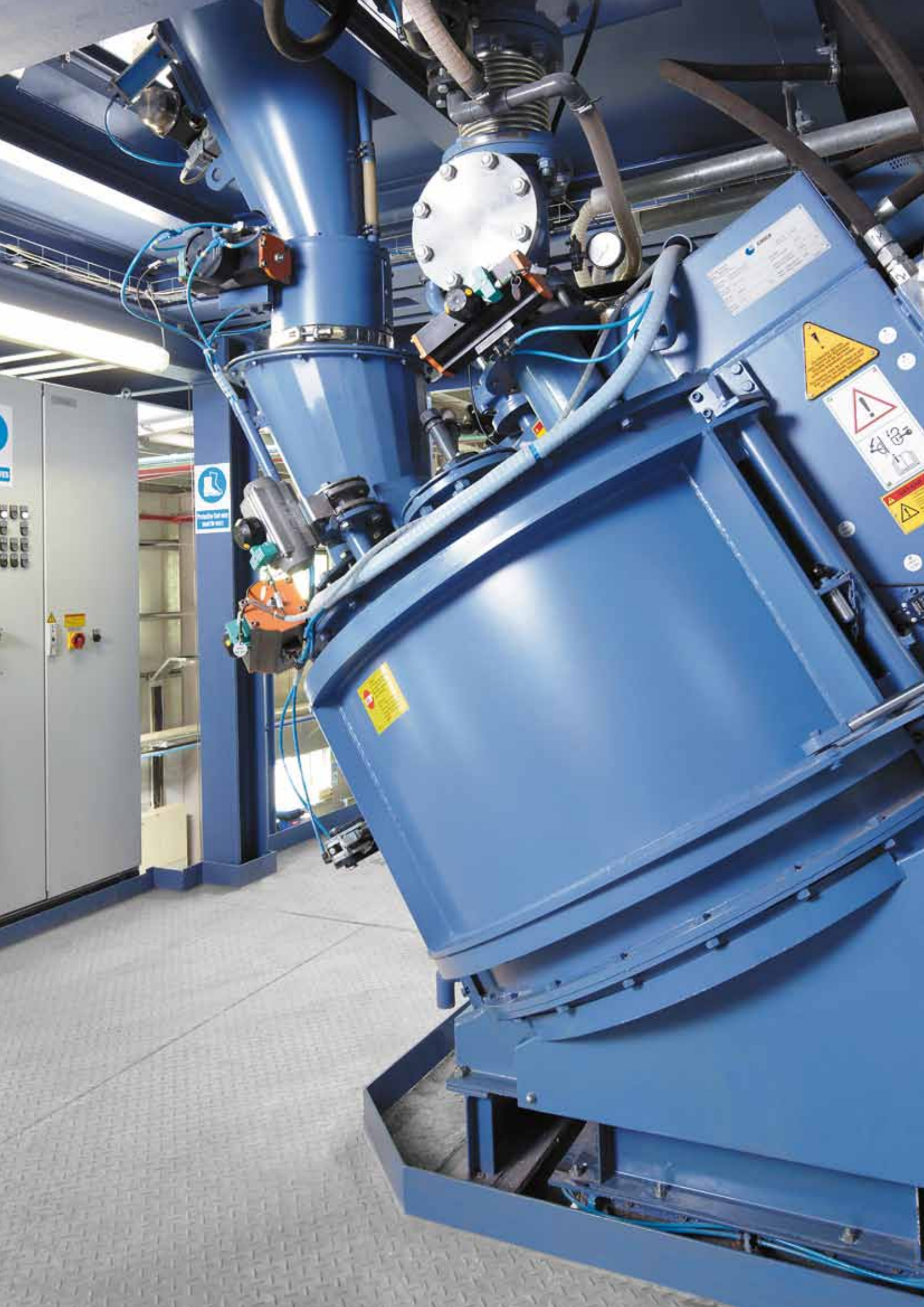
The latest technologies are used to control and monitor the entire production flow with automatic measurement and correction of penetration.

## Systems engineering

Systems engineering from EIRICH means: Fully automated systems for the preparation of lead acid paste from one source. Services range from consulting, engineering, building of machines and complete systems, control and instrumentation technology, installation, commissioning and operator training to after-sales support and the reliable delivery of spare parts – worldwide.







# EVACTHERM® Mixing Reactor: An efficient, high-capacity and environment

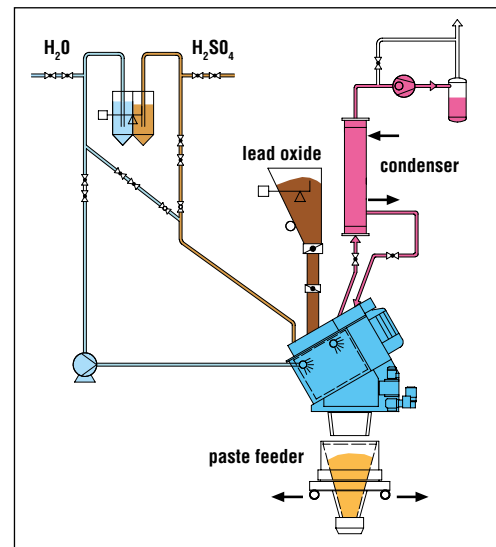
**The EVACTHERM® mixing reactor is a closed system in which the mixing and reacting processes take place under controlled conditions.**

## **The mixing principle**

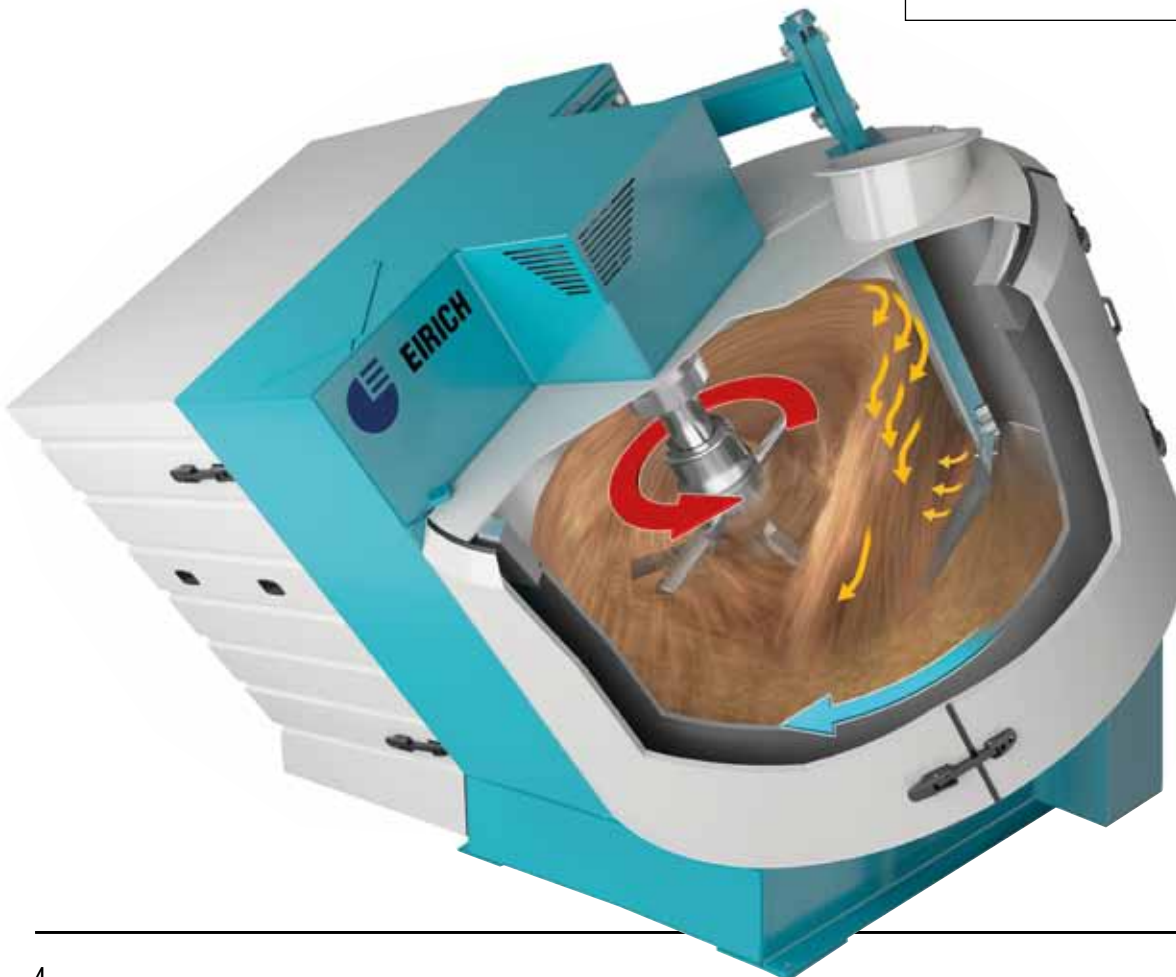
The outstanding processing effect is achieved by

- the rotating mixing pan, which with each rotation directs the paste into the eccentrically placed, high-speed rotating mixing tool. This results in material flows with a high velocity differential.
- the inclined rotating mixing pan, which in conjunction with a stationary, multi-purpose bottom-wall scraper ensures a pronounced vertical circulation of the material flow.

- the multi-purpose bottom-wall scraper, which reliably prevents material build-up and accelerates the discharge of the batch at the end of the mixing cycle.



*Schematic of the process*



*The worldwide unique  
EIRICH mixing principle*

# ally friendly system

## The reactor principle

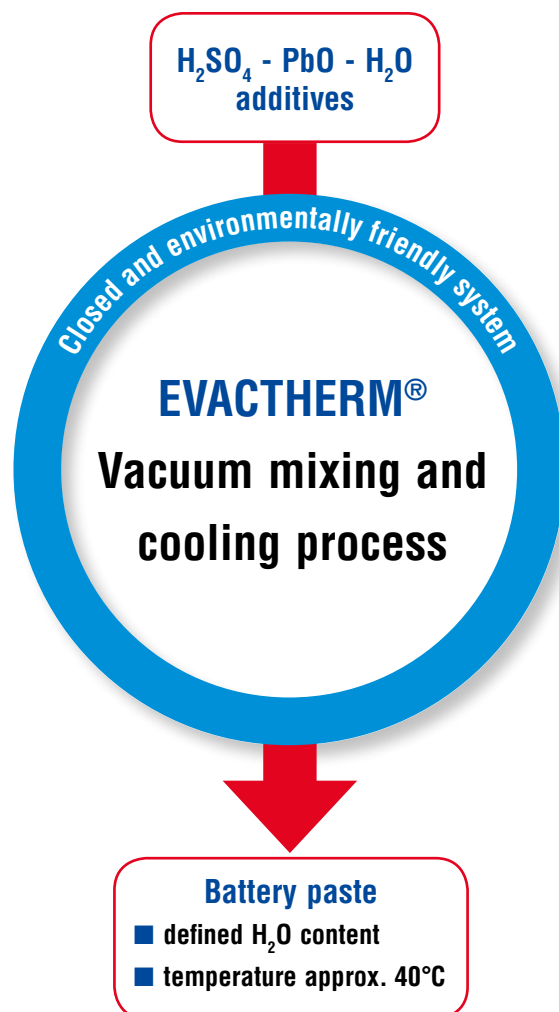
The EVACTHERM® process is based on the relationship between a liquid's boiling point and ambient pressure. The lower the ambient pressure, the lower the boiling point of water. By controlling the pressure in the mixer it is possible to set and control an exact temperature curve throughout the reaction period.

The temperatures specified in the formula are reached in the shortest possible time. The resulting steam is condensed and the condensate returned to the process.

## Process reliability and operational safety

Acids and additives are distributed quickly and evenly. Automatic penetration control by the EVACTHERM® process ensures consistent rheological properties.

The EVACTHERM® mixing reactor is rugged in design, has simple drive systems and requires only two mixing elements. There is no contact between the product and the shaft seals and bearings. Automatic self-cleaning is performed at the beginning of each new batch. The self-adjusting seal of the discharge gate ensures an optimal leak protection of the mixing pan.



## EVACTHERM brings advantages

**Unlike conventional air cooling, vacuum cooling with the EVACTHERM® process brings you decisive advantages in terms of process engineering and technology:**

- No dependence on fluctuations of air temperature and humidity
- No corruption of formulas by loss of raw materials in the cooling air
- Exact compliance with preselected temperature curves
- No local overheating in the mixing reactor
- Effective process control
- Paste of reproducible, constant quality
- Automatic penetration control
- No large currents of outlet air requiring special cleaning
- A closed, environmentally friendly system
- Self-cleaning of the pan with formula water at the beginning of each new batch



# The module system

For the economical processing of lead acid paste by the EVACTHERM® process EIRICH developed an efficient module system which has set new standards worldwide. The various modules, all built by EIRICH itself, are standardized to be particularly good value for money and friendly in use.

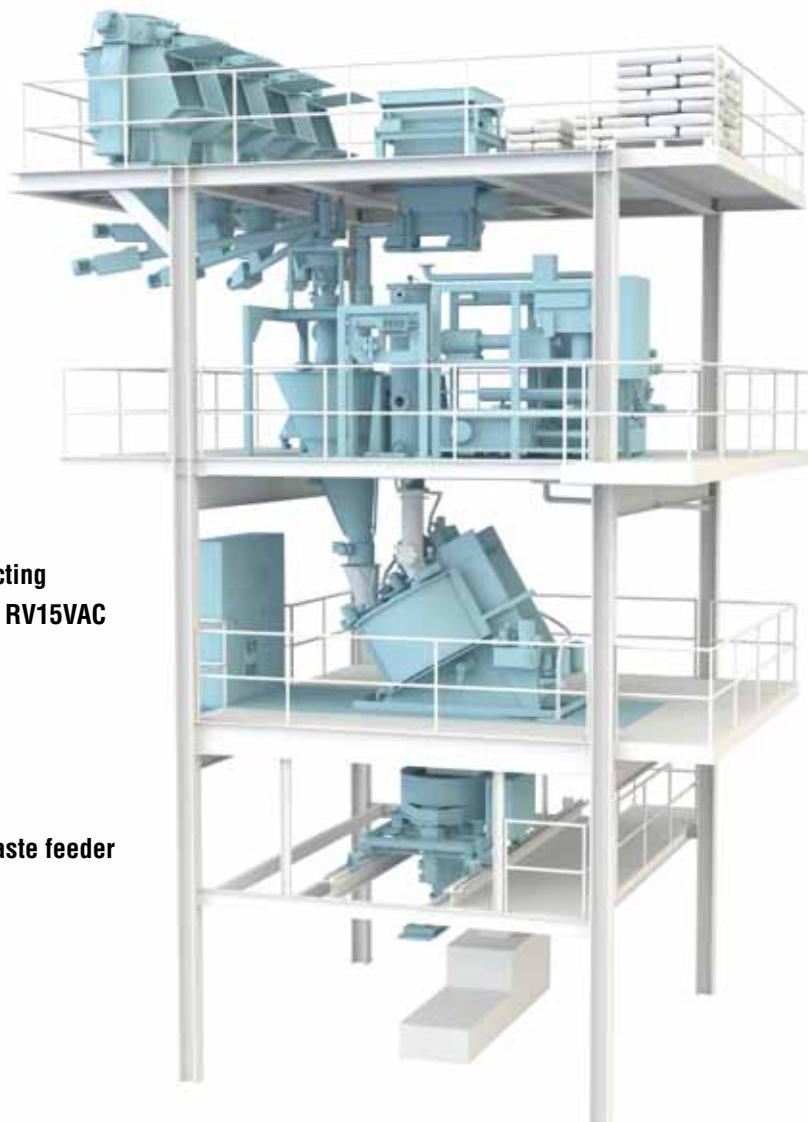
The modules are preassembled by EIRICH. All functions and sequences are fully tested, together with the control system. This guarantees the shortest possible installation and commissioning times plus a high level of operational reliability – from the very outset.

**Additive and  
fiber feeding  
(option)**

**Module:  
Weighing and  
vacuum unit**

**Module:  
Mixing and reacting  
with RV11VAC / RV15VAC  
Control system**

**Paste feeder**







# Additive and fiber feeding

Storage and a fully automatic additive and fiber feeding system (optional).





# Weighing and vacuum unit

The module consists of a lead dust scale, liquid scales, condenser and vacuum unit.



# Mixing and reacting

Both processes are performed in the EVACTHERM® mixing reactor. The module comes with an RV11VAC or an RV15VAC mixing reactor, depending on the capacity requirements.

## **RV11VAC**

900 kg of lead acid paste per batch

Depending on the production range this results in an output of 2,700 to 3,600 kg/h.

## **RV15VAC**

1,500 kg of lead acid paste per batch

Depending on the production range this results in an output of 4,500 to 6,000 kg/h.



*System with 2 mixers  
type RV11VAC*



*High-pressure cleaning nozzles  
Pin-type rotor*





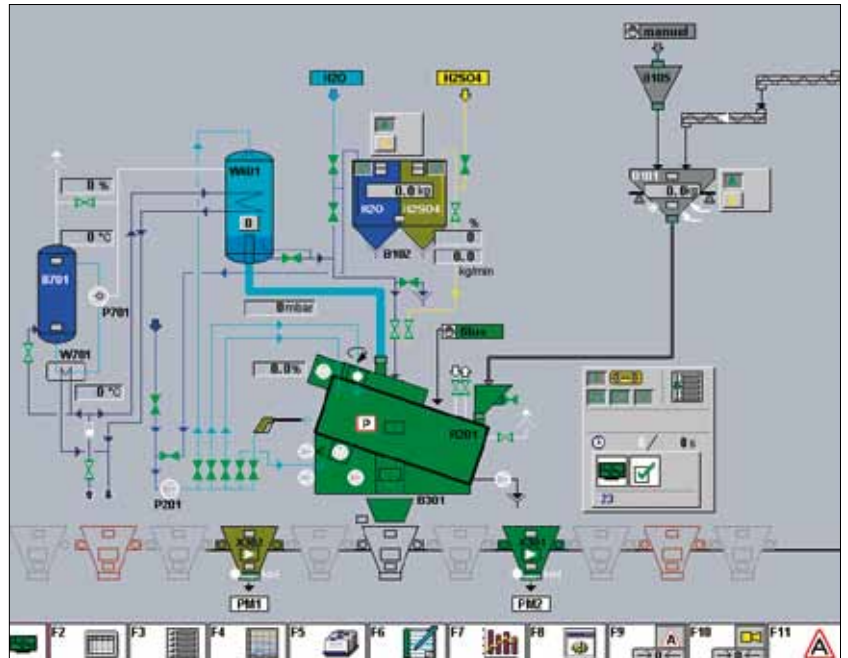
# Control system

Special software was developed for the processing of lead acid paste. Used with a modern process visualization system and PLC it enables all functions to be controlled and monitored.

The system representation graphics and the input/output masks are particularly user-friendly.

## The user surface provides:

- Function keys for data input
- Pull-down menus for raw materials, formulas and process data
- Displays of operating data and logging options
- Optional selection of detailed displays and function groups
- Troubleshooting help



# Paste feeder



The paste feeders are mobile and ensure a continuous supply of material to the pasting lines. One paste feeder is used for each pasting line. Several pasting lines can thus be supplied by one EVACTHERM® system.

## Industrial Mixing and Fine Grinding Technology

### Tradition and innovation since 1863

EIRICH stands worldwide for a comprehensive range of products and services in the field of preparation technology. Its particular focus is on mixing and fine grinding technology, with know-how developed over 150 years of close cooperation with industrial users, universities and research institutions.

Pursuing a corporate philosophy of operating internationally and thereby ensuring close proximity to every customer, the EIRICH Group has secured its place in all the key economic regions of the world.

The focus is on innovative technology for machinery and systems engineering designed to offer solutions for high-standard preparation tasks from a single source.

Applications and process technology with own test centers, a high vertical range of production and comprehensive after-sales service provide the ideal basis for the development of modern and economical processes for a multitude of industries.

**Building materials – Ceramics – Glass – Carbon paste – Battery paste  
Friction linings – Metallurgy – Foundries – Environmental protection**

#### The EIRICH Group worldwide:



**Maschinenfabrik Gustav Eirich  
GmbH & Co KG**  
Postfach 11 60  
74732 Hardheim, Germany  
Phone: +49 (0) 6283 51-0  
Fax: +49 (0) 6283 51-325  
E-mail: [eirich@eirich.de](mailto:eirich@eirich.de)  
Internet: [www.eirich.com](http://www.eirich.com)



**Eirich France SAS**  
Saint-Priest, France



**OOO Eirich Maschinentchnik**  
Moscow, Russia



**OOO Eirich Maschinentchnik**  
Dnepropetrovsk, Ukraine



**Eirich Machines, Inc.**  
Gurnee, IL, USA



**Eirich Industrial Ltda.**  
Jandira S.P., Brazil



**Nippon Eirich Co. Ltd.**  
Chiba, Japan



**Eirich East Asia/Pacific**  
Seoul, Republic of Korea



**Eirich Group China Ltd.**  
Shanghai & Beijing, P.R. China  
**Eirich Machinery Jiangyin Co., Ltd.**  
Jiangyin, Jiangsu Province, P.R. China



**Eirich India Pvt. Ltd.**  
Mumbai, India



**H. Birkenmayer (Pty.) Ltd.**  
Isando, Republic of South Africa

[www.eirich.com](http://www.eirich.com)



The Pioneer in Material Processing®